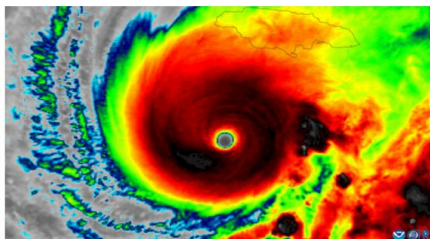


HURRICANE MELISSA

SITUATION REPORT No. 19 (FINAL)

AS OF 5:00 PM, DECEMBER 19, 2025

REGIONAL COORDINATION CENTER (RCC) DEACTIVATED AS AT 5:00 PM (AST)



SITUATION OVERVIEW: Hurricane Melissa Impact

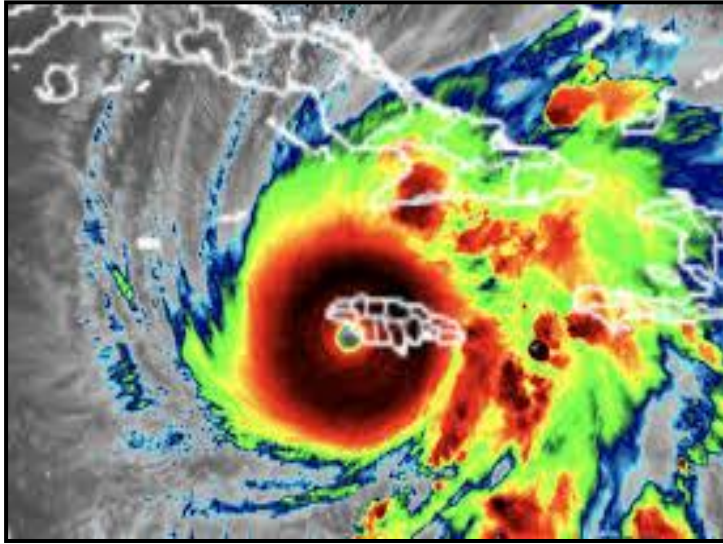


Figure 1: Satellite imagery of Hurricane Melissa making landfall in western Jamaica.

Over the period October 24 to 26, 2025, Tropical Cyclone Melissa developed and intensified rapidly across the central and western Caribbean, posing a growing threat to several CDEMA Participating States (PSs) in the northwestern sub-region, including Jamaica, the Cayman Islands, Haiti, The Bahamas, and the Turks and Caicos Islands. During this period, forecast uncertainty remained high, with successive advisories indicating potential rapid intensification and multi-state impacts, prompting national authorities across the threatened PSs to escalate preparedness measures. While Jamaica was assessed as facing the highest risk of direct impact, prompting heightened national readiness and the full activation of emergency coordination mechanisms, the Cayman Islands

and Turks and Caicos Islands experienced deteriorating conditions marked by heavy rainfall, gusty winds, and hazardous marine conditions, resulting in localized flooding and minor disruptions. Haiti experienced indirect impacts, including localized flooding and heightened landslide risk in vulnerable areas, exacerbating existing humanitarian and environmental challenges, while The Bahamas recorded intermittent rainfall and adverse marine conditions, with no significant damage reported.

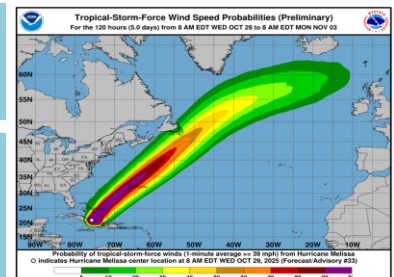
By October 27, 2025, Melissa had strengthened into a major hurricane, with a rapidly falling central pressure and sustained winds exceeding 210 km/h (130 mph). On October 28, 2025, Hurricane Melissa intensified further and made landfall in Jamaica as a Category 5 hurricane, with estimated maximum sustained winds of approximately 280 km/h (175 mph) and a minimum central pressure below 920 mb, indicative of an extremely powerful system. The hurricane generated extreme winds, intense rainfall, and life-threatening conditions, including widespread flooding, landslides, and extensive debris impacts across multiple parishes.

From October 29 through early November 2025, Melissa weakened as it moved away from Jamaica, while residual weather effects continued to impact parts of the northern Caribbean. Conditions gradually stabilized across affected PSs, allowing national and regional authorities to scale down heightened monitoring and transition from impact monitoring and life-saving response to assessments, and early recovery planning.



Figure 2 (left): Rainfall Forecast
(Source: <https://www.noaa.gov/at 5:00 PM 20251029>)

Figure 3 (right): Wind Speed Probabilities
(Source: <https://www.noaa.gov/at 5:00 PM 20251029>)



SUMMARY OF NATIONAL LEVEL OPERATIONS



THE BAHAMAS

In The Bahamas, the national emergency coordination systems remained on heightened readiness throughout the threat period with enhanced monitoring in place however, there was no requirement to escalate to full activation of the National Emergency Operations Centre (NEOC). Preparedness actions included the dissemination of weather and marine advisories, close monitoring of coastal and maritime conditions, and routine readiness measures managed at the Regional Response Mechanism (RRM) Level 1- no external assistance required.

According to the Disaster Risk Management (DRM) Authority, Bahamian authorities issued the **“All Clear”** on **Friday, October 31, 2025, at 8:00 a.m.**, signaling the transition from response to early recovery. Emergency shelters were subsequently deactivated, and evacuees began returning to their homes.

Post-impact efforts focused on damage assessment and service restoration. Rapid Assessment Teams undertook damage and sectoral assessments, while utility companies were mobilized to restore power, water, and telecommunications services. Debris clearance operations facilitated the reopening of several roadways and improved access across affected areas.

Within the health sector, 32 of the clinics closed ahead of Hurricane Melissa were reopened. In addition, the airstrips were reopened to resume operations, restoring air access across the affected islands. While flooding persisted in some low-lying areas, overall impacts were limited and included minor roof damage. Targeted distribution of tarpaulins and emergency supplies was undertaken for affected households in Acklins, Inagua, Exuma, San Salvador, Ragged Island, Crooked Island, and Rum Cay.



CAYMAN ISLANDS

In the Cayman Islands, national authorities placed emergency coordination mechanisms on heightened readiness over the period **October 24 – 26, 2025**, and provided periodic weather updates to the public. While full activation of the National Emergency Operations Centre (NEOC) was not required, preparedness actions included the issuance of public information and advisories, readiness checks for emergency services and shelters, and precautionary measures for ports and maritime activities. Throughout the threat period, Marine Watch remained in effect, supported by sustained monitoring of weather and marine conditions.

Sectoral preparedness actions were implemented to support potential post-impact needs. Infrastructure and utilities providers placed technical staff, line crews, and equipment assets on standby, while the health sector confirmed the availability of surge personnel. Humanitarian preparedness was advanced through coordination between the Cayman Islands Red Cross and the Jamaica Red Cross, alongside logistics planning for possible repatriation of Caymanian nationals.

Additional measures included social support considerations for affected public officers, heightened preparations of security and emergency response personnel trained in CDEMA-RRM aligned thematic areas.

SUMMARY OF NATIONAL LEVEL OPERATIONS



HAITI

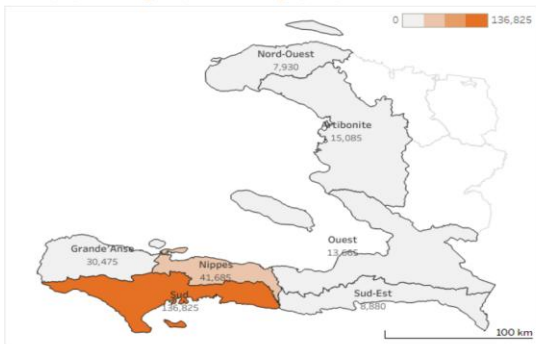
Report from the Directorate General of Civil Protection (DGPC) DANA Dashboard

In Haiti, authorities adopted an increased coordination and monitoring posture over the October 24 to 26, 2025 period, particularly in flood- and landslide-prone areas. Although no full national NEOC activation was reported, preparedness actions focused on monitoring rainfall and river levels, supporting localized preparedness in high-risk communities, and coordinating with humanitarian partners to mitigate compounding risks in already vulnerable areas.



**254,545
PERSONS
AFFECTED**

total population [people affected] by department



Department	Total – Affected Persons	Affected Persons – Men	Affected Persons – Women	Affected Persons – Elderly	Affected Persons – Children
Artibonite	15,085	7,423	7,662	1,015	1,574
Grande'Anse	30,475	5,433	25,042	15,021	3,345
Nippes	41,685	20,172	21,513	12,903	7,796
Nord-Ouest	7,930	3,707	4,223	1,259	1,236

Number of communal sections per department where:
houses [flooded]



		Houses	Schools	Hospitals / Centres Health	Public buildings	Other types of buildings
Flooded	19,424 (2.3%)	19,232	169	4	15	37
Destroyed	1,516 (0.2%)	1,336	19			13
Damaged	11,557 (1.4%)	11,028	113	2	1	56
Less Damaged	19,566 (2.3%)	19,313	105	4	3	69

health centers affected by department



Department	Number of Communal Sections Reporting	Available Health Centres	Available Hospitals	Available Dispensaries
Artibonite	5	2	1	3
Grande'Anse	28	9	2	13
Nippes	12	6	2	2
Nord-Ouest	30	12	3	20
Ouest	17	11	8	2
Sud	66	30	10	21
Sud-Est	24	12	5	11

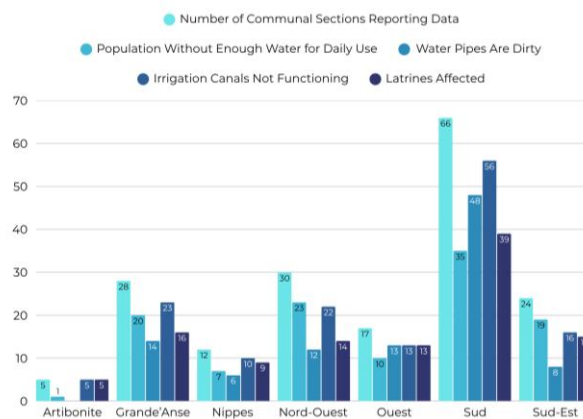
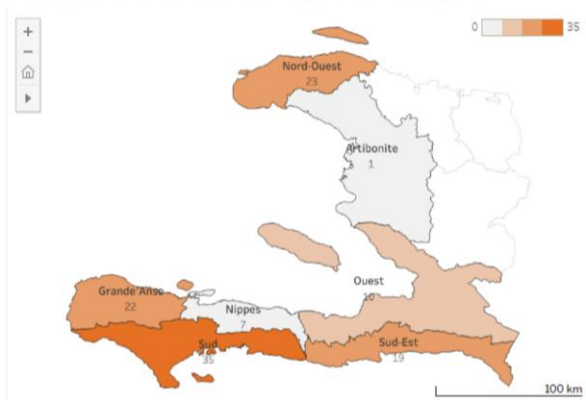
SUMMARY OF NATIONAL LEVEL OPERATIONS



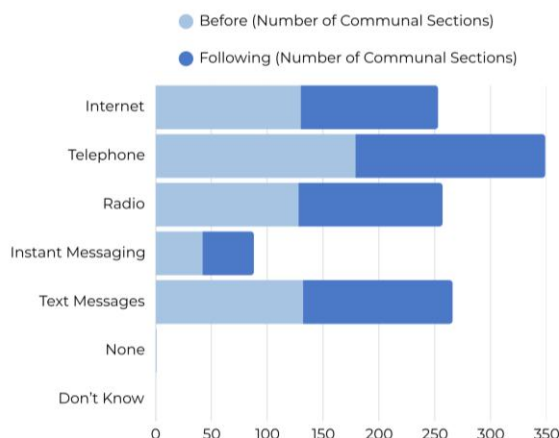
HAITI (Continued)

Report from the Directorate General of Civil Protection (DGPC) DANA Dashboard

Number of communal sections per department where:
the population does not have enough water for daily use



Number of communal sections per department where:
electricity [never]



Schools used as temporary shelters, by department



Total number of schools

4,409



Total number of damaged schools

113



Total number of schools

19



Total number of students attending the school

127,603



Total number of schools used as temporary shelters

253



Total number of people in temporary shelters (school)

5,148

SUMMARY OF NATIONAL LEVEL OPERATIONS



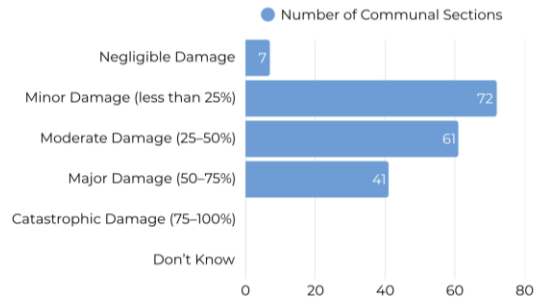
HAITI (Continued)

Report from the Directorate General of Civil Protection (DGPC) DANA Dashboard

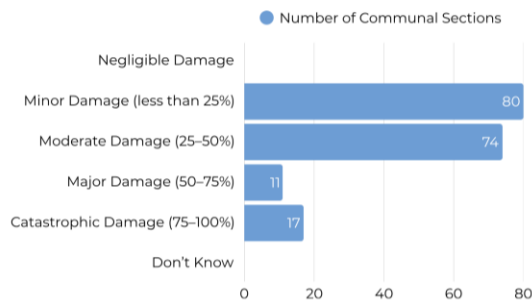
Number of communal sections per department where:
animals [major damage (50-75%)]



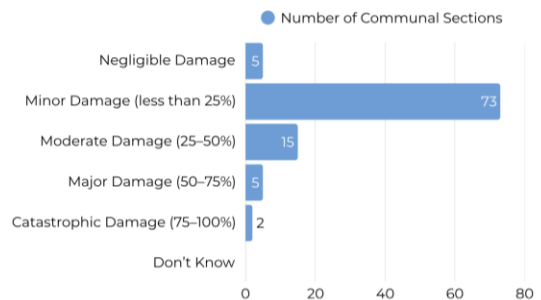
DAMAGE TO CROPS



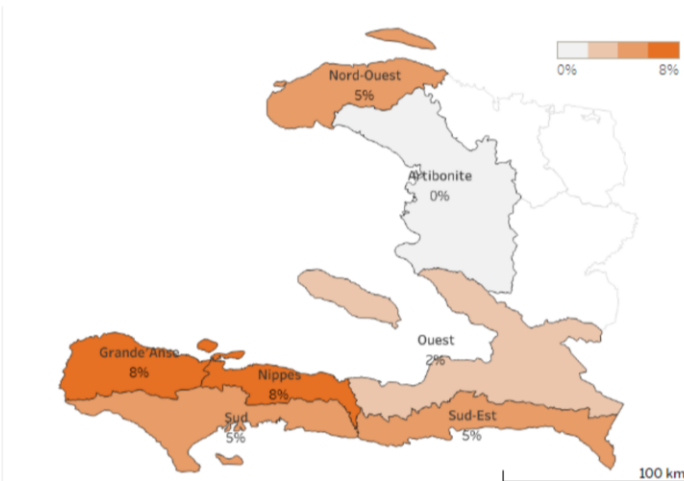
DAMAGE TO STORED AGRICULTURAL PRODUCTS



DAMAGE TO ANIMALS



Temporary shelter by department



Sector / Need	Percentage
Temporary shelter	5%
Debris removal	12%
Water	12%
Shelter and non-food	10%
Food	15%
Child protection	3%
Gender-based	2%
Health – injured	3%
Health – epidemic	11%
Maternal health	5%
Search and rescue	0%
Public safety	4%
Bedding kits	5%
Water/hygiene kits	13%

SUMMARY OF NATIONAL LEVEL OPERATIONS



JAMAICA

In Jamaica, the national emergency coordination mechanisms were activated ahead of impact, with the National Emergency Operations Centre (NEOC) escalated to Level 3 (Full Activation) by 25 October 2025 under the coordination of the Office of Disaster Preparedness and Emergency Management (ODPEM). This was supported by the activation of Parish Emergency Operations Centres in high-risk and affected parishes. Key preparedness actions included the issuance of public advisories, pre-positioning of response resources, activation of emergency shelters, inter-ministerial coordination, and early engagement with regional partners under the Regional Response Mechanism (RRM), alongside preparations for rapid damage and needs assessments and continuity of governance operations.

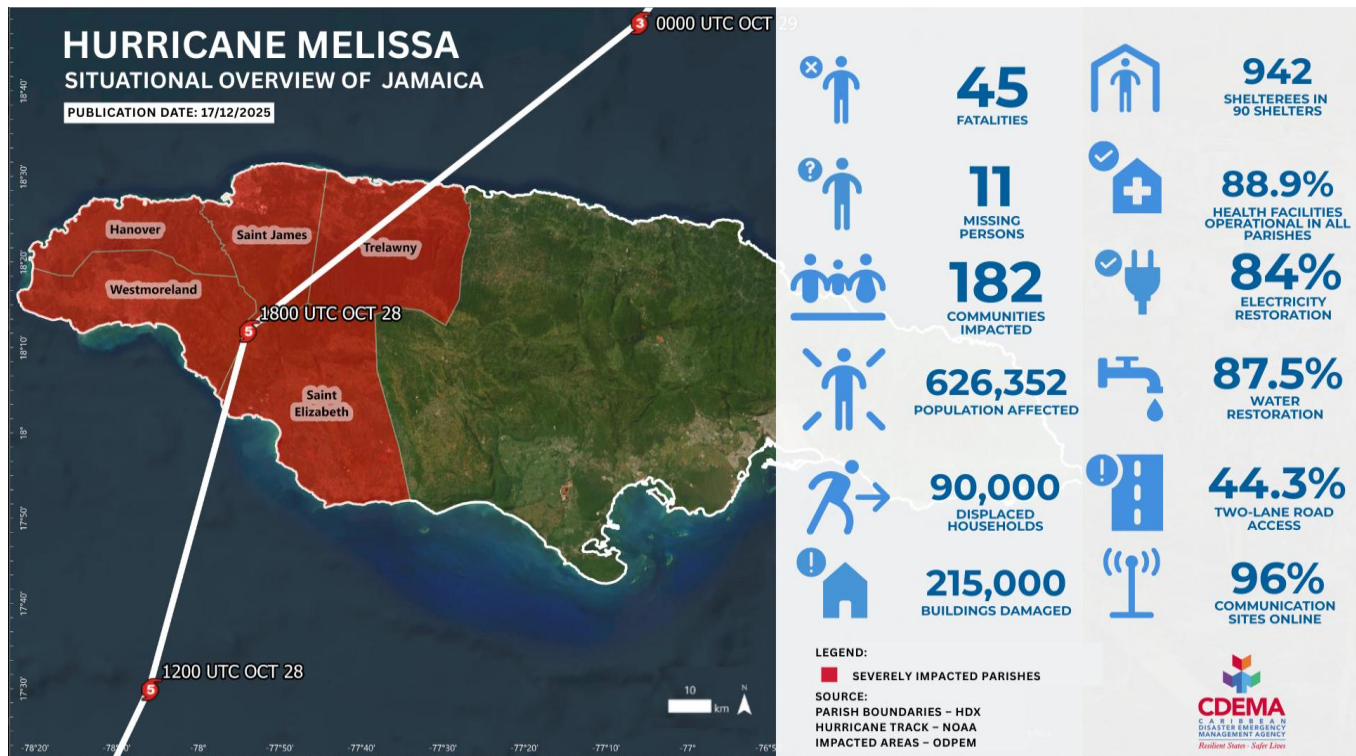


Table 1: Emergency Shelter Activation and Occupancy

Parish	Shelter Activation Status	Total Occupancy	Last updated
Manchester	1	2	Dec. 15, 2025
St. Elizabeth	22	167	Dec. 15, 2025
Westmoreland	30	479	Dec. 15, 2025
St. Ann	2	12	Dec. 15, 2025
Trelawny	7	125	Dec. 15, 2025
St. James	23	128	Dec. 15, 2025
Hanover	5	29	Dec. 15, 2025
Total	90	942	Dec. 17, 2025

Critical Resource Needs as at December 17, 2025:

Food packages, Tarpaulins, relief supplies, Water, Sanitation, and Hygiene (WASH) Kits, clothing, adult and baby diapers. Baby food, water, field tents for temporary housing, bedding, blankets, sheets, roofing and housing materials, and basic medical supplies.

REGIONAL AND INTERNATIONAL SUPPORT THROUGH THE RRM



COORDINATION

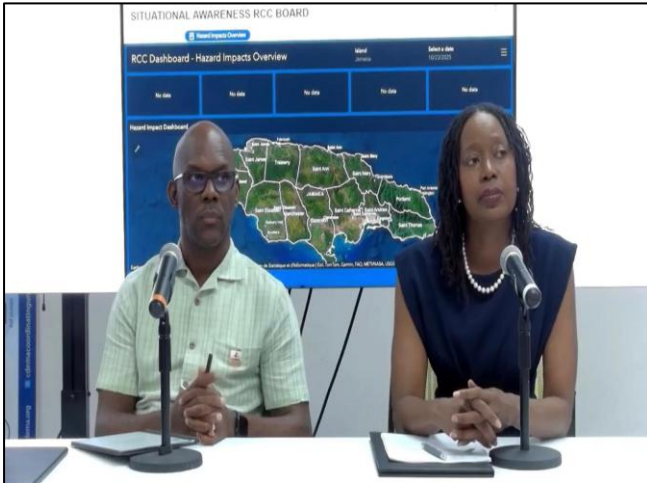


Figure 2: CDEMA Executive Director (Elizabeth Riley –right) and Deputy Executive Director (Kester Craig – left) media brief, October 29, 2025.



Figure 3: CDEMA Executive Director (Elizabeth Riley) and UN Resident Coordinator for Jamaica (Dennis Zulu –right) conducting field visits to the impacted parishes in Jamaica.

The CDEMA Executive Director (ED) activated the Regional Coordination Plan (RCP) at 11:00 a.m. (AST) on October 21, 2025, in response to the evolving threat posed by Hurricane Melissa. The CARICOM Secretary General and the CDEMA Chairman were subsequently briefed by the ED on the regional risk outlook, RRM preparedness posture, and anticipated response actions. The first Caribbean Development Partners Group (CDPG) meeting was convened on October 22, 2025, co-chaired by the CDEMA ED and the United Nations Resident Coordinator for Jamaica.

To strengthen national preparedness ahead of the impact on Jamaica, CDEMA pre-deployed a two-person CARICOM Operations Support Team (COST) to Jamaica on October 24, 2025, comprising a Coordination Specialist and an Emergency Telecommunications Specialist. As the situation escalated following landfall, the Regional Coordination Centre (RCC) was activated on October 28, 2025, at 9:00 a.m. (AST) to coordinate regional response operations, regional information management, partner engagement, and readiness in support of affected and threatened Participating States.

Under the Regional Response Mechanism (RRM), a range of regional response teams were deployed as required to reinforce national response capacities in Jamaica. These included additional COST personnel, the Rapid Needs Assessment Team (RNAT), the CARICOM Emergency Telecommunications Team (CETT), logistics support, mental health and psychosocial support (MHPSS) Team, information management, and drone/UAV assessment capabilities. Collectively, these teams provided strategic advisory support, operational coordination, damage assessments, emergency telecommunications, logistics coordination, and enhanced situational awareness in direct support of the National Emergency Operations Centre (NEOC) at the Office of Disaster Preparedness and Emergency Management (ODPEM), Jamaica.

REGIONAL AND INTERNATIONAL SUPPORT THROUGH THE RRM



COORDINATION (continued)

To ensure consistent and timely information sharing, CDEMA published a suite of regional information products throughout the event, including five (5) Information Notes and nineteen (19) Situation Reports (SitReps) spanning the preparedness, impact, response, and early recovery phases. Regional coordination was further reinforced through twenty-five (25) CDPG coordination meetings, facilitating sustained engagement with national authorities, technical service providers, and regional and international partners to support joint situational awareness, alignment of response actions, prioritization of regional support, and decision-making across the event lifecycle.

As national response and recovery coordination stabilized and transitioned toward sustained recovery, regional surge coordination mechanisms were progressively scaled down. The Regional Coordination Centre (RCC) was formally deactivated on December 19, 2025, however the Regional Coordination Plan (RCP) will remain activated till January 31, 2026, to allow for continued, though scaled-down, support to Jamaica.

SUMMARY OF RRM DEPLOYMENTS



CDEMA extends its sincere appreciation to the **United Kingdom Foreign, Commonwealth and Development Office (UK FCDO)**, the **CARICOM Development Fund (CDF)**, and the **Caribbean Development Bank (CDB)** for their critical financial support to the Regional Response Mechanism (RRM) operations in response to Hurricane Melissa. The UK FCDO's support enabled the deployment of the Caribbean Electric Utility Services Corporation (CARILEC) to support Jamaica Public Service (JPS) in the restoration of the national power grid, as well as the deployment of the Barbados Defence Force (BDF) Emergency Medical Team / Field Medical Hospital (EMT/FMH), providing essential life-saving medical services to affected communities. In parallel, the CDF and CDB provided vital funding to support the deployment of RRM teams. This timely and coordinated financing significantly enhanced the effectiveness of the regional response and underscores the importance of sustained partnerships in strengthening Caribbean resilience to disasters.

UPDATES FROM THE CDPG THEMATIC WORKING GROUPS (TWG) - AS OF DECEMBER 16TH, 2025



EMERGENCY COMMUNICATION

- Telecommunications Service:
 - Digicel has restored 749 of its 900 sites, with 815 mobile sites now operational. The company's fibre network is fully functional, supporting improved connectivity across affected areas.
 - Flow reports that 86% of its services have been restored, with 64% of customers back online. Approximately 80% of Flow's mobile sites are operational, and overall network traffic is functioning at 97% of normal capacity.
- Electricity (JPS):
 - The Government provided a USD 150 million loan to accelerate power restoration.
 - National electricity restoration currently ranges from 82% to 90%, with targets of:
 - 90% by Christmas/New Year
 - 100% by end of January 2026
- An additional 300 line workers are being deployed, bringing total crews to approximately 470, with further equipment and trucks being mobilized.
- Priority restoration areas include the western parishes and Savanna-la-Mar.
- As of 16 December, national restoration has reached 84%, with all parish capitals re-energized except Black River, which is expected to be restored by Christmas.
- 97% of major hospitals have regained public power service.
- Online traffic has been restored to over 90% of pre-Melissa levels.



SHELTER

- A total of 90 shelters remain active, accommodating 942 persons, with 1,086 persons still displaced overall. Among them are 678 students from 146 schools.
- Fifty-five (55) schools continue to serve as shelters. The Government of Jamaica aims to close all school-based shelters by January 6th to facilitate the restart of classes.
- No unusual disease syndromes have been detected in shelters or affected communities.
- Damage assessment efforts are ongoing, with 46,000 assessments completed out of an estimated 90,000 impacted households. To date, 41,044 assessments have been validated. A total of 544 trained assessors have been mobilized, supported by 60 Jamaica Defence Force (JDF) officers in the western parishes and 30 additional assessors funded by WFP. The Guyana Defence Force is providing further support to roof repair operations.
- To ease the financial burden on affected families, the Government has introduced a six-month mortgage moratorium for homeowners in the impacted parishes.

UPDATES FROM THE CDPG THEMATIC WORKING GROUPS (TWG) - AS OF DECEMBER 16TH, 2025



HEALTH

- Hospital Infrastructure and Restoration
 - Repairs to damaged operating theatres are underway and expected to be completed within 2–3 months (Jan–Feb 2026).
 - All affected hospitals will undergo structural and functional assessments, with Falmouth Hospital and Savanna-la-Mar Hospital prioritized for Phase 1.
- Field Hospitals and External Medical Teams
 - Savanna-la-Mar Field Hospital (Barbados EMT/FM H): The facility is fully operational and supported by approximately 70 personnel, including 43 general medical staff, 17 pediatric specialists, and additional technical team members. Patient admissions have increased to 6–8 per day, up from 4 previously, and the team is performing up to 4 surgeries daily.
 - Black River Field Hospital (Samaritan's Purse): Relocation of the facility from Black River High School to the Black River Hospital compound was scheduled for December 14, 2025. The consolidated site is equipped with an oxygen generator and a desalination plant. Samaritan's Purse is transitioning out of Jamaica but will leave the facility in place with remote technical support. To date, the team has treated more than 3,800 patients, including 2,600 at the hospital, conducted 99 surgeries, and recorded 218 admissions.
 - Spanish Field Hospital (Falmouth): The facility has been dismantled as the Falmouth Hospital has resumed independent operations.
- Transition of Foreign Medical Teams:
 - Hundreds of international health workers have supported medical operations over the past 6 weeks.
 - A phased withdrawal is ongoing: the Spanish team has departed and Samaritan's Purse will withdraw by the end of December 2025.
 - Transition plans are being developed and implemented to ensure continuity of services through local teams.
 - Selected external support have been extended into January 2026.
- Primary Health Care Services
 - Routine primary care has largely resumed through temporary tents, mobile units, and outreach clinics.
 - Regional Updates:
 - Westmoreland: Supported by Team Rubicon and Red Cross (continuing through January).
 - St. Elizabeth: Tents established at Black River Health Centre and Middle Quarters; services delivered via alternative sites and outreach.
 - Hanover: Expanded clinic days at Mount Peto.
 - St. James & Trelawny: External teams will demobilize by late December; local teams will resume normal operations.

UPDATES FROM THE CDPG THEMATIC WORKING GROUPS (TWG) – AS OF DECEMBER 16TH, 2025



HEALTH continued.

➤ Pharmaceutical Services

- 90% of public-sector pharmacies are now operational, with the remaining 10 percent being served through mobile units due to structural damage. Mobile pharmacy services have filled 4,440 prescriptions for more than 3,500 patients, reaching 62 hard-to-access communities through 102 outreach visits. As of 7 December, a total of 292,000 prescriptions have been filled nationwide, aligning with pre-Melissa dispensing levels.

➤ Chinese Hospital Ship – Ark Silk Road

- A 300-bed floating hospital with full diagnostic and surgical capabilities completed three mission stops in Jamaica. In Kingston, the team treated 2,766 patients and conducted 206 surgeries, while in the Western Region they served approximately 2,000 patients and performed 277 surgeries. The final stop took place in Falmouth from December 12 - 15. The mission is staffed by more than 100 medical personnel and operates in close coordination with the Ministry of Health and local authorities.

➤ Disease Surveillance and Public Health

- Leptospirosis: A total of 91 leptospirosis cases have been reported following Hurricane Melissa resulting in 12 suspected deaths, and 7 confirmed deaths. The numbers are now declining due to intensified debris removal efforts. Males account for 84% of all cases and all confirmed deaths. The highest incidence has been observed among individuals aged 20–29, while the highest mortality has occurred in those aged 60 and above.
- Dengue: Activity remains below seasonal averages, though the risk is forecast to continue into early 2026.
- Respiratory Illness: this falls within normal range; circulating strains include H1N1 and H3N2. Flu vaccines are available nation wide.
- Gastroenteritis: Trends are within expected seasonal limits.

➤ Casualties and Missing Persons

- A total of 45 deaths have been confirmed as directly attributable to Hurricane Melissa.
- An additional 32 deaths remain under investigation.
- Twelve (12) persons are still reported missing, representing a significant reduction due to ongoing efforts by the Jamaica Constabulary Force.

UPDATES FROM THE CDPG THEMATIC WORKING GROUPS (TWG) – AS OF DECEMBER 16TH, 2025



RELIEF & LOGISTICS

➤ CDEMA Logistics System (CLS)

- CDEMA and the World Food Programme (WFP) are currently tracking 117 relief shipments from 67 organizations destined for Jamaica. Major contributors by volume include the Global Empowerment Mission (GEM), European Civil Protection and Humanitarian Aid Operations (ECHO), WFP, Amazon, and the International Federation of Red Cross and Red Crescent Societies (IFRC).
- To support storage and onward transport, WFP is operating eight Mobile Storage Units (MSUs) across Jamaica. Through these facilities, more than 70,000 emergency food kits have been dispatched to over 110 distribution sites.
- WFP is also coordinating a shipment for the Department of Emergency Management (DEM) aboard the MV Seaboard Ocean, carrying food and WASH supplies.
- The Logistics Thematic Working Group is also tracking 11 shipments from 8 partners currently in transit, totaling 384 MT and 690 cubic meters of relief supplies.
- WFP is concurrently transporting 129 MT of food commodities for Jamaica.
- By weight, the incoming relief is comprised of 94% food, 4% WASH items, and 2% shelter materials.
- Key organizations with cargo enroute include IFRC, the Salvation Army, SOS International, and GlobalMedic.
- The Working Group is also monitoring a planned shipment from Pier 17, Dominicana, expected to include WASH and shelter items.

➤ Air and Sea Port Operations

- All airports in Jamaica have resumed operations following the hurricane impact. Relief flight operations began on 30 October, and structural restoration of airport facilities is expected to continue through February–March 2026.
- To date, approximately 3,000 flights have been recorded, including 935 dedicated relief flights, which account for nearly 50 percent of total aircraft movements. Aviation support has also included 310 helicopter missions conducting supply deliveries and evacuations. Civil aviation channels have transported an estimated 5,000–6,000 metric tons of cargo since operations began.
- Seaports remain a critical supply route, with relief shipments arriving weekly. Maritime transport continues to supplement air operations, ensuring the steady flow of food, shelter, and WASH commodities.

➤ Fuel and Energy

- Fuel supply remains stable, with Petrojam reporting secure operations.
- Approximately 3,600 tankers have been loaded since the response began, and national fuel inventory levels remain adequate to support ongoing humanitarian operations and essential services.

Updates from the CDPG Thematic Working Groups (TWG) - Actions by the RRM Partners as of 7:00 p.m. on December 9th, 2025



RELIEF & LOGISTICS Con't

➤ Relief Distribution

- The Office of Disaster Preparedness and Emergency Management (ODPEM) has distributed 34,000 food packages, while the Jamaica Defence Force (JDF) has provided 242,000 additional packages. In total, food assistance has reached an estimated 314,000 people across 379 communities, with 12,000 food kits issued and more than 3.3 million hot meals distributed.
- To date, 39,000 individuals have completed impact and housing needs assessments, informing ongoing relief and recovery planning. The Government is preparing to transition from food care packages to cash-based assistance beginning in early January 2026, enabling greater flexibility and supporting economic recovery in affected communities.
- Meetings of the National Logistics Coalition continue regularly, with partners reporting improved coordination and strengthened supply chain processes across government, humanitarian agencies, and the private sector.



PROTECTION

➤ Gender-Based Violence (GBV):

- A GBV response and recovery strategy has been developed through April 2026 with monthly safety audits planned.
- Mapping of GBV service providers is ongoing and referral pathways are being updated at parish level.

➤ Child Protection:

- Child abuse reporting mechanisms are fully functional.
- Coordination with the Child Protection and Family Services Agency continues and the development of child-friendly information materials is ongoing.

➤ Prevention of Sexual Exploitation and Abuse (PSEA):

- PSEA training with security forces and partners is ongoing.
- Small grants planned for women-led Civil Society Organizations to strengthen community-based protection.



WATER, SANITATION & HYGIENE (WASH)

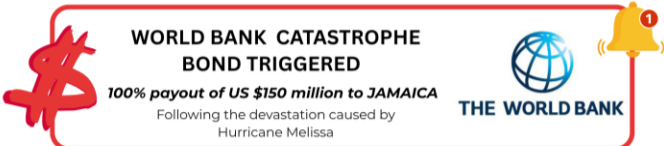
- 86% of the National Water Commission customers have restored access to water services. Twelve (12) additional water trucks have been deployed and have distributed 146,000 gallons of water.
- Approximately 50,000 persons remain reliant on trucked water. Water purification sites have been established across the western parishes.

DONATIONS AND PLEDGES MADE BY COUNTRIES/PARTNERS - AS AT 5:00 P.M. DECEMBER 19TH, 2025

Country	Donations and Pledges	Destination
Anguilla	USD \$10,000 financial contribution; 200 lbs of relief supplies (tarpaulins, buckets, shelter kits); Additional Government pledge of XCD \$500,000; Public collection of water and sanitation items ongoing.	Jamaica
Bahamas	The Government of The Bahamas has pledged up to USD \$2,000,000 in combined financial, in-kind, and relief support toward Jamaica's recovery following Hurricane Melissa. The support package includes significant quantities of relief supplies as well as specialized assets such as a disaster container city, a field kitchen, a trailer head, and a crane. Additional capabilities, including potable water and ice production, are also being provided through the Royal Bahamas Defence Force (RBDF) vessel assigned to the mission.	Jamaica
Barbados	Shipment of eight (8) 20-ft containers containing: 1,219 heavy-duty tarpaulins, 1,300 cots, 50 generators, 4 chainsaws, food items, hygiene supplies, toiletries, linens. Six containers already dispatched; two more scheduled for Nov 19. Estimated total value: USD \$535,209.08.	Jamaica
Belize	Financial pledge of US\$200,000 each to the Governments of Jamaica and Cuba to support immediate humanitarian relief following Hurricane Melissa. Additional relief supplies (hygiene items, canned foods, and cash) were dispatched to Belizean students in both countries.	Jamaica, Cuba
Canada	Approx. USD \$7.87M total humanitarian support, including: USD \$3.21M to WFP (food/logistics for Jamaica & Cuba); USD \$1.07M to Canadian Red Cross; USD \$1.07M to CARE Canada; USD \$714k to PAHO (healthcare in Jamaica); USD \$714k in relief items/medical kits via CRC; USD \$500k to MSF; USD \$250k each to Plan Canada & CLWR (Haiti); USD \$93k for deployment of humanitarian experts (CANADEM/CRC).	Jamaica, Cuba, Haiti
Caribbean Development Bank (CDB)	USD \$50,000 provided to support the deployment of emergency response teams under the Regional Response Mechanism (RRM).	CDEMA RRM
Caribbean Development Fund (CDF)	The CDF has contributed USD \$300,000 to facilitate the deployment of emergency response teams under the Regional Response Mechanism (RRM), supporting coordinated regional assistance during Hurricane Melissa. In addition, the Fund has provided a further USD \$500,000 to bolster debris removal operations, helping accelerate national clean-up efforts, restore access routes, and improve conditions for ongoing relief and early recovery activities.	CDEMA RRM
Cayman Islands	USD \$1.2M financial contribution; mattresses, generators, tarps, fuel cans, first aid kits, consumables; USD \$21,025 in medical supplies; USD \$11,000 raised through HSA staff + USD \$10,000 from First Baptist Church; medical supplies from Health City & JDW; MREs; all shipments coordinated through NEOC Human Concerns Cluster with Cayman Airways support.	Jamaica
European Union (EU – ECHO & ERCC)	Over EUR 18M in combined humanitarian and early recovery support. Includes EUR 7.25M via ECHO (Jamaica EUR 2.8M; Cuba EUR 3.45M; Haiti EUR 1M); EU Humanitarian Air Bridge delivering 149 tons of relief items; UCPM assistance from six Member States providing WASH, shelter, PPE, energy items and an EMT Type 2 field hospital; 340 tons of relief goods transported by French & Dutch forces; private-sector aid including 50 tons of airlifted cargo (DHL) and 55 satellite links (HISPASAT).	Haiti, Jamaica, Cuba
Grenada	The Government of Grenada plans on sending 150 double sized mattresses and 10 generators to Jamaica.	Jamaica
Guyana (CDC)	Tarpaulins, chainsaws, and generators supported through private sector contributions (approx. USD \$101,000).	Jamaica
Japan (JICA)	Emergency relief items including tents, sleeping pads, portable jerry cans.	Jamaica
Saint Kitts & Nevis	Saint Kitts and Nevis has pledged a financial contribution US\$100,000 to support the Government and people of Jamaica in their recovery and rebuilding efforts.	Jamaica

DONATIONS AND PLEDGES MADE BY COUNTRIES/PARTNERS - AS AT 5:00 P.M. DECEMBER 19TH, 2025

Country	Donations and Pledges	Destination
Switzerland (Swiss Agency for Development & Cooperation – SDC)	Approx. USD \$462,000 humanitarian assistance: USD \$280k to IFRC (Cuba/Jamaica); USD \$182k to GiveDirectly for cash assistance in Jamaica; top-up support to water/DRR/cash projects in Haiti; deployment of Swiss Humanitarian Aid experts + 2.5 tons of water-treatment equipment to Cuba.	Jamaica, Haiti, Cuba
Trinidad & Tobago (ODPM)	Four (4) 40-ft containers shipped to Jamaica containing food, hygiene items, PPE, mattresses, tarps, linens, cleaning supplies, galvanized sheeting, generators, and non-perishables. Six (6) 40-ft containers approved for Haiti with food, hygiene, linens, and relief items; additional consignments arriving at port for dispatch.	Jamaica, Haiti
United Arab Emirates (UAE)	USD \$500,000 contribution through CDEMA to support most affected states.	Multi-country (via CDEMA CU)
United Kingdom (FCDO)	USD \$10.6M financial assistance; additional in-kind support such as shelter kits, solar lanterns, and hygiene kits; multiple relief shipments coordinated. Up to £475,000 (≈ USD \$641,250) provided to support CDEMA Emergency Response Teams, enhancing operational readiness and deployments across affected states. Relief support provided by engineers on HMS Trent, UKMED EMT operational in Trelawny parish	Jamaica CDEMA RRM
United States of America (USA)	USD \$37.1M emergency package: Jamaica (USD \$22M), Haiti (USD \$11.6M), The Bahamas (USD \$500k), Cuba (USD \$3M). Covers food, WASH, shelter, emergency response, logistics, and life-saving assistance.	Jamaica, Haiti, Cuba, The Bahamas



WORLD BANK CATASTROPHE BOND TRIGGERED

100% payout of US \$150 million to JAMAICA

Following the devastation caused by Hurricane Melissa

THE WORLD BANK



CCRIF TO MAKE RECORD PAYOUT TO JAMAICA

US \$70.8 MILLION (~J \$11.4 BILLION) 31/10/2025

US \$21.1 MILLION (~J \$3.4 BILLION) 06/11/2025

TOTAL PAYOUTS - US \$91.9 MILLION (~J \$14.8 BILLION)

CCRIFSPC

Summary

- Thanks are extended to all RRM partners for their continued support to national and regional preparedness, response, and recovery efforts.

Links to Situation Reports

[Hurricane Melissa Situation Report #1](#)

[Hurricane Melissa Situation Report #2](#)

[Hurricane Melissa Situation Report #3](#)

[Hurricane Melissa Situation Report #4](#)

[Hurricane Melissa Situation Report #5](#)

[Hurricane Melissa Situation Report #6](#)

[Hurricane Melissa Situation Report #7](#)

[Hurricane Melissa Situation Report #8](#)

[Hurricane Melissa Situation Report #9](#)

[Hurricane Melissa Situation Report #10](#)

[Hurricane Melissa Situation Report #11](#)

[Hurricane Melissa Situation Report #12](#)

[Hurricane Melissa Situation Report #13](#)

[Hurricane Melissa Situation Report #14](#)

[Hurricane Melissa Situation Report #15](#)

[Hurricane Melissa Situation Report #16](#)

[Hurricane Melissa Situation Report #17](#)

[Hurricane Melissa Situation Report #18](#)

Links to Needs Lists and Other Information:

[Hurricane Melissa Documents](#)

[Official Needs Lists – Jamaica](#)

[Relief and Logistics TWG Website](#)

[Customs and Consignee Procedures for Disaster Relief](#)

[Cayman Islands Hurricane Melissa Relief Efforts](#)

[Official Needs List - Haiti](#)