

Hurricane Beryl

INFORMATION NOTE No. 2

AS OF 8:00 PM (AST) ON 30TH JUNE 2024

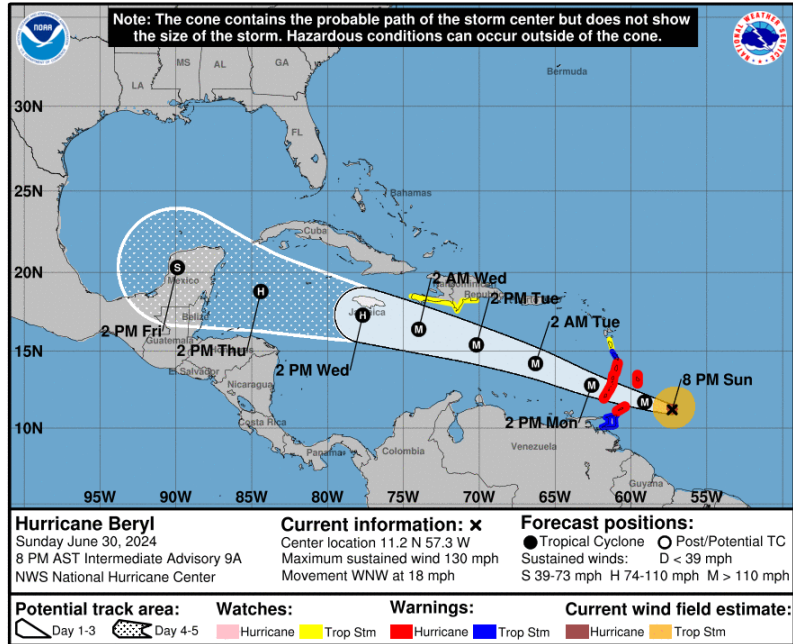
Extremely Dangerous Category 4 Beryl Threatens CDEMA Participating States

According to the National Hurricane Centre (NHC), Hurricane Beryl is approaching the Windward Islands as an Extremely Dangerous Category 4 Storm with life-threatening winds and storm surge expected early Monday morning.

Hurricane Warnings in effect for: Barbados, Saint Lucia, St. Vincent and the Grenadines, Grenada and Tobago.

Tropical Storm Warning in effect for Trinidad

Tropical Storm Watch is in effect for: Dominica and South Coast of Haiti.



(Source: [National Hurricane Centre](https://www.nhc.noaa.gov))

According to the NHC, at 800 PM AST (0000 UTC), the center of Hurricane Beryl was located near **latitude 11.2 North, longitude 57.3 West**. Beryl is moving toward the west-northwest near **18 mph (30 km/h)**. A continued quick westward to west-northwestward motion is expected during the next few days. On the forecast track, the center of Beryl is expected to move across the Windward Islands Monday morning and across the southeastern and central Caribbean Sea late Monday through Wednesday.

Data from both the Air Force Reserve and NOAA Hurricane Hunter aircraft indicate that **maximum sustained winds remain near 130 mph (215 km/h)** with higher gusts. Beryl is a category 4 hurricane on the Saffir-Simpson Hurricane Wind Scale. Fluctuations in strength are likely during the next day or so, and Beryl is expected to remain an extremely dangerous category 4 hurricane through landfall in the Windward Islands.

Hurricane-force winds extend outward up to **30 miles (45 km)** from the center and **tropical-storm-force winds** extend outward up to **115 miles (185 km)**.

The estimated minimum central pressure is **958 mb (28.29 inches)**.

Severe Weather Update from the Caribbean Institute of Meteorology and Hydrology (CIMH) at 1:00 PM, 30th June 2024.

Disclaimer: The CIMH provides special weather interpretation of the current and forecasted tropical weather affecting the Caribbean Region and is NOT an official forecasting agency.

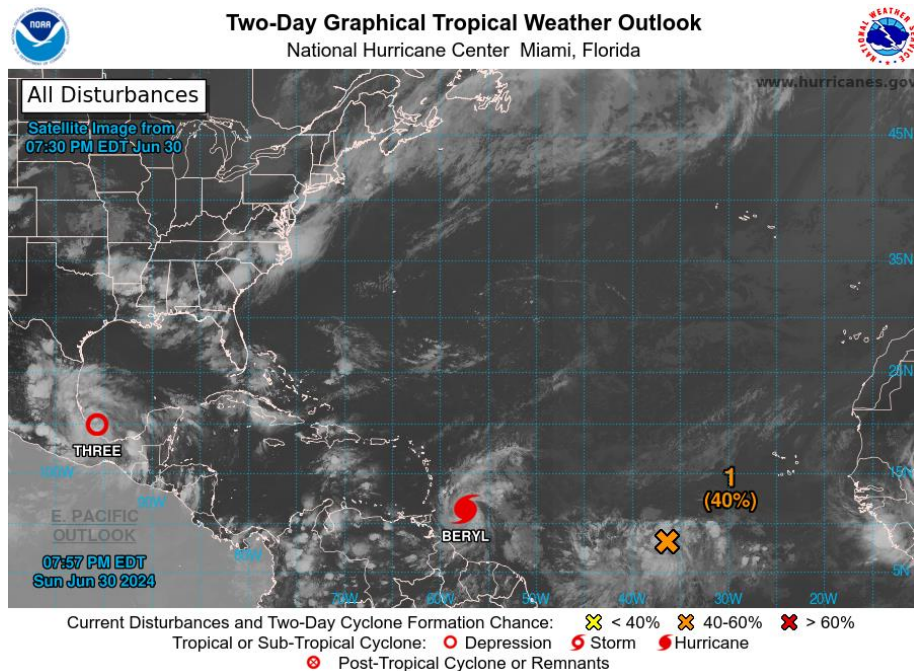
30 June 2024 - 12:00 UTC ... HURRICANE BERYL IS CONTINUING TO RAPIDLY INTENSIFY AS IT APPROACHES THE CARIBBEAN... FORECAST TO BRING LIFE-THREATENING WINDS AND STORM SURGE TO THE WINDWARD ISLANDS AS AN EXTREMELY DANGEROUS HURRICANE. THE CENTER OF BERYL IS EXPECTED TO PASS THROUGH THE GRENADINES ISLANDS ON MONDAY.

Weather: Hurricane Beryl is a relatively compact storm and is projected to intensify to an EXTREMELY DANGEROUS Hurricane over the Southern Lesser Antilles. Frequent showers with occasional to frequent thunderstorms are expected over St. Vincent and the Grenadines, Grenada, Tobago, Barbados, and Saint Lucia. Banding showers/thundershowers are expected over Dominica.

Rainfall: Hurricane Beryl is likely to produce heavy rainfall with totals reaching 6 to 7 inches (150 - 180 mm). Rainfall could be up to 210 mm in embedded thundershowers. This rainfall could lead to flash floods and landslides in vulnerable areas in Beryl's path.

Winds: There is a high chance of significant impacts across the St. Vincent and the Grenadines. Medium to High chance of significant impacts across Barbados and portions of Windward Islands. Hurricane force winds will be close to the storm center over affected islands.

Marine: Rough seas with wave heights of 5 to 6 meters with the passing of Beryl, higher in low lying coastal areas. Sea spray, choppy seas and large breaking waves in open waters. There is a high risk of significant impacts along the east and south coast of Barbados. Medium chance of significant impacts across Dominica, Saint Lucia, Saint Vincent, Grenada and Tobago.



Updates from the CDEMA Participating States



BARBADOS

- A National Emergency Meeting was held earlier today, 30th June 2024
- The NEOC will be fully activated at 6:00 p.m., 30th June 2024 – a two-shift system will be used
- Emergency Shelters will be opened at 6:00 p.m. 30th June 2024
- Private Sector to close by 7:00 p.m. 30th June 2024
- The airport will close at 7:00 p.m. 30th June 2024
- Bus services will end at 8:00 p.m. 30th June 2024
- Several agencies are in the field conducting final checks and preparatory actions
- Water ways are being cleared to reduce the impact of potential flooding
- A national update was provided at 5:15 p.m. 30th June 2024



DOMINICA

- The Prime Minister chaired the meeting for the National Emergency Planning Organization (NEPO)
- Public awareness actions are ongoing.
- A Tropical Storm Watch is in effect.



GRENADA

The Honourable Dickon Mitchell, Prime Minister of Grenada provided the following update to the CDPG on the readiness of the country:

- A meeting of the National Emergency Advisory Council was convened on 29 June 2024
- The Honourable Prime Minister addressed the country
- Shelters opened at noon on 30th June 2024
- A State of Emergency will take effect from 7:00p.m. 30th June 2024 for a period of seven days
- Heavy equipment has been repositioned to support road clearance

Updates from the CDEMA Participating States



SAINT LUCIA

- The Prime Minister chaired the NEMAC Meeting yesterday, 29th June 2024
- There will be a National Shutdown at 8.30 p.m. 30th June 2024
- The airport will close at 7:00 p.m. 30th June 2024
- National Emergency Operations Centre activated at 5:00PM, 30 June 2024
- All events are cancelled
- The Utility Companies indicated their readiness and support



ST. VINCENT AND THE GRENADINES

Dr. The Honourable Ralph E. Gonsalves, Prime Minister of Saint Vincent and the Grenadines, updated the CDPG on the readiness of the country:

- Meetings of the National Emergency Management Advisory Council were convened to ascertain readiness
- The Honourable Prime Minister addressed the country on 30th June 2024
- The Argyle airport will close at 6:00 p.m. 30th June 2024
- Shelters will be opened at 6:00PM 30 June 2024
- Boats were placed in the Marina for safety
- Curfew will be in effect at 7:00 p.m. today 30th June 2024
- The Power Company will shut down power at 8:00AM 1 July 2024 to safeguard equipment
- St. Vincent and the Grenadines Coast Guard Open Patrol Vessel sailed to Antigua for the passage of the Beryl



TRINIDAD AND TOBAGO

- The Government of Trinidad and Tobago is finalizing emergency preparations before the impact
- Persons at risk have been evacuated from vulnerable areas
- Stakeholders have provided an update on their status of readiness
- Heavy equipment has been prepositioned and is on standby to support debris clearance operations post the impact of Hurricane Beryl
- Shelters will be opened from 30th June 2024
- Notifications regarding the closure of schools will be distributed
- All systems will be activated by 6:00 p.m. today 30th June 2024

Concerns

- Impact to the East and North coasts

Status of Preparedness of the CDEMA System

The Regional Response Mechanism (RRM), CDEMA's unique arrangement with Participating States and various regional and international organizations and militaries to deliver timely and coordinated response to impacted Participating States on request, continue to advance regional preparations.

- ✓ Convened the 3rd Caribbean Development Partners Group (CDPG) meeting, 30th June 2024
- ✓ Presented Operational Scenarios based on the information provided by the Meteorological Services. These will be reviewed, tweaked and updated.

Response Teams:

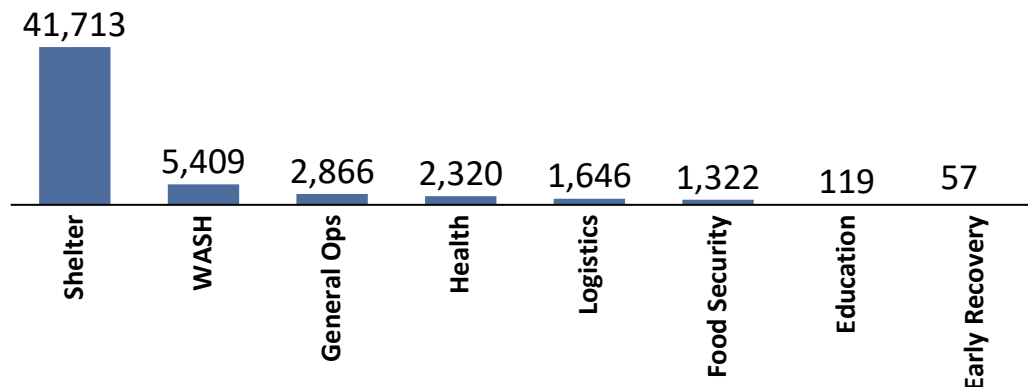
- ✓ All RRM Response Teams have been placed on alert including the CARICOM Disaster Relief Unit (CDRU) (through the Regional Security System-RSS); The Regional Search and Rescue Team (RSART) (through the Caribbean Association of Fire Chiefs (CAFC); the CARICOM Operational Support Team (COST), CARICOM Disaster Assessment and Coordination (CDAC) Team, Rapid Needs Assessment Team (RNAT).
- ✓ Deployment kits are packed and ready deployment. The CDEMA CU continues to work with UN OCHA and UNETT to consolidate a list of deployment capacity.

Emergency Telecommunications Equipment Upgrades

- ✓ The ICT Department has secured communications kits for the deployment teams comprising a mix of Starlink Satellite Internet Terminals, VSAT Terminals, Solar Generators with Solar Panels, Ruggedized Cell Phones, Ruggedized Laptops, Global Positioning Systems (GPS) Handheld devices, and additional power supplies and travel/ carrying cases.

Emergency Relief Items across the RRM

- ✓ Common items in stock on the CDEMA Logistics System registered by the RRM partners are as follows: 29K Tarpaulins, 3.5 K Buckets, 14 K Blankets, 1.8 K Medical Kits, 6 K Soap Bars, 1.3 K Cooking sets.
- ✓ Common items in stock across the region by sector (qty) are as follows:



RRM PARTNER UPDATES

UNITED NATIONS

- UN agencies have shared a list with the CDEMA CU of deployable staff to support assessments.
- Continue to ensure that all relief data is updated and accurate within the CDEMA Logistics System.

UN OCHA

- Two focal points are currently on standby to provide additional Coordination and IM/GIS support.

WFP

- WFP is on standby to support affected countries including, technical support in social protection, impact assessments, provision of cash and in-kind assistance, emergency telecommunications, and transport and storage, including establishment of logistics hubs.
- WFP has presence in four of the countries and has pre-deployed additional surge capacity to Saint Lucia and Grenada to support the government-led response efforts. The Country Director is currently deployed to St Vincent and the Grenadines.
- WFP has prepositioned emergency response equipment throughout the region and ready to be deployed based on need along with agreements with major shipping and aviation companies to support the transport of food and other relief items, where needed. Potential surge requirements for key staff have been provided as a contingency for deployment and business continuity plans for the MCO updated.
- WFP has an agreement with a Caribbean-based distributor in place, which will allow mobilization of enough food for 15,000 people for two weeks and can mobilize ready-to-eat meals (MREs), enough to feed 5000 people.
- 5,000 pre-paid card solutions will soon be in place, which can be deployed to support 15,000 beneficiaries where government systems are not adequate, but markets are in place.
- Through the Caribbean Regional Logistics Hub, WFP manages pre-positioned non-food relief items and will work with the wider humanitarian community to mobilize support in the event of a crisis affecting multiple countries in the Caribbean.

UNICEF ECA

- Emergency Management and Immediate Response Team met and have reconfirmed deployable staff. UNICEF has reached out to Ministry counterparts in potentially impacted states to determine readiness. Additional regional surge capacity is ready to deploy if needed.

IFRC

- Red Cross currently has a stock listing for all the potentially impacted islands and stockpiles in all countries in the Caribbean. IFRC has re-positioned technical staff in Barbados to support any coordination with regional agencies.
- IFRC are looking to deploy staff to any of the potential countries. Red Cross NEOC have been activated.
- All community disaster response teams are on standby and ready to respond to support any damage assessments.
- IFRC has engaged with the preliminary distribution items for members of the Wheels on Meals programme.

RRM PARTNER UPDATES

IOM

- Personnel are stand-by: 4 in Barbados, 3 in Dominica and 4 in Trinidad with a focus on emergency shelter, evacuation housing, evacuations of stranded migrants, NFI distributions and protection. All emergency shelters have been mapped and available to be shared with partners.

ITU

- 14 SAT Phones are currently available and ready for the response phase.
- An additional shipment of 10 SAT Phones and 5 BGANs will be delivered to Barbados in the next few days.