

EXPLOSIVE ERUPTION AT LA SOUFRIÈRE VOLCANO, ST. VINCENT

SITUATION REPORT No. 15

AS OF 8:00 PM ON 16 APRIL, 2021

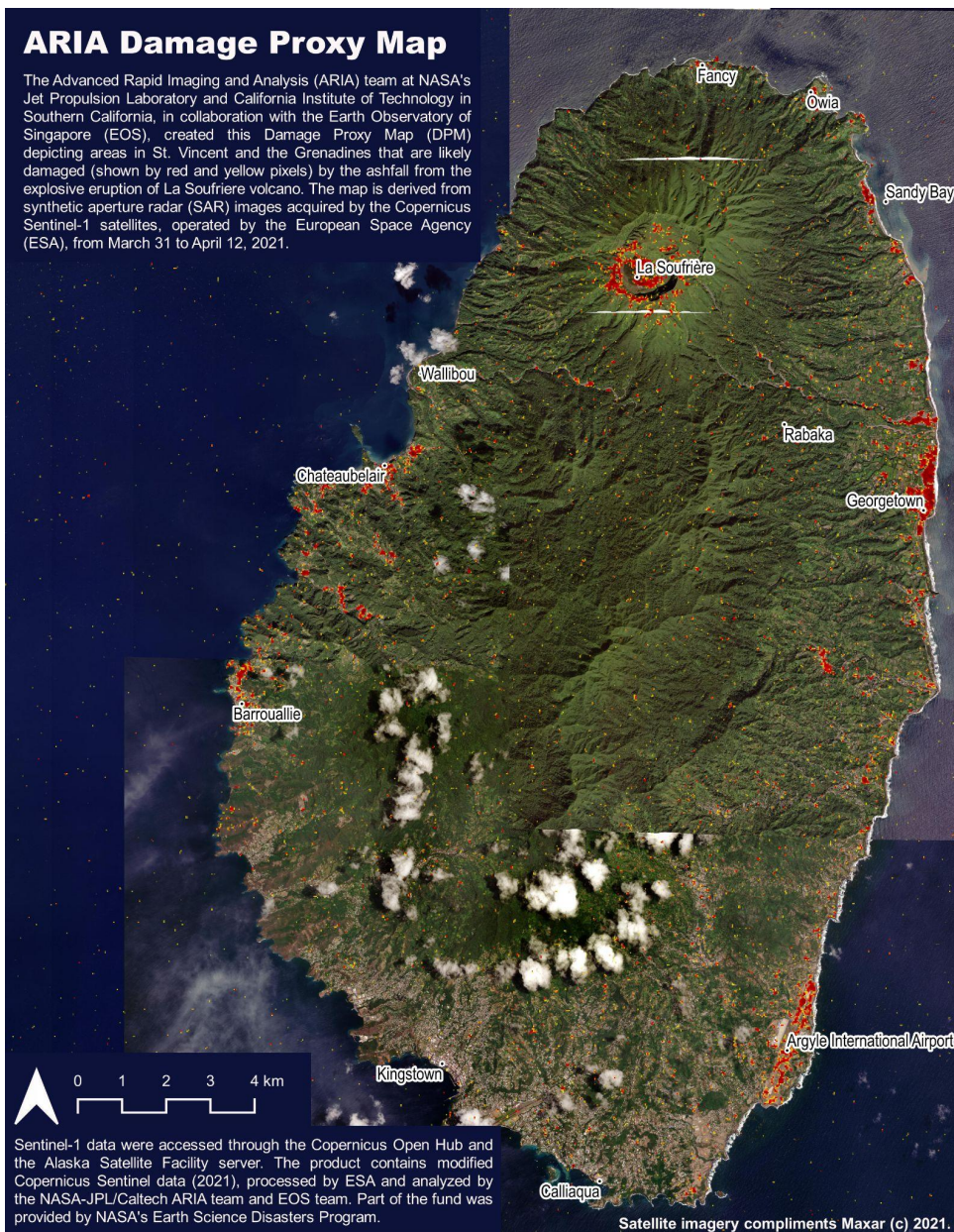
Volcanic Eruptions Continue at La Soufrière, St. Vincent

The 6:00am Scientific Advisory from the UWI Seismic Research Centre (SRC) issued on 16th April, 2021, reported the following:

- Seismic activity at La Soufrière, St Vincent continued as before with a near-constant swarm of long-period and hybrid earthquakes. There was one band of low-level tremor at 9pm on 15 April which lasted about 40 minutes and may have been associated with a small increase in venting.
- The first successful measurements of sulphur dioxide flux at La Soufriere volcano was undertaken along the west coast yesterday. With the assistance of the coast guard several traverses were done by boat and yielded an average SO₂ flux of 809 tons per day.
- An explosive eruption occurred at 6:15am with the eruption column estimated at roughly 8000m high with an ash cloud seen moving towards the west of St. Vincent.

ARIA Damage Proxy Map

The Advanced Rapid Imaging and Analysis (ARIA) team at NASA's Jet Propulsion Laboratory and California Institute of Technology in Southern California, in collaboration with the Earth Observatory of Singapore (EOS), created this Damage Proxy Map (DPM) depicting areas in St. Vincent and the Grenadines that are likely damaged (shown by red and yellow pixels) by the ashfall from the explosive eruption of La Soufriere volcano. The map is derived from synthetic aperture radar (SAR) images acquired by the Copernicus Sentinel-1 satellites, operated by the European Space Agency (ESA), from March 31 to April 12, 2021.



Evacuation Orders have been issued. Access to the volcano is strictly prohibited.

Updates from Impacted CDEMA Participating State

The Caribbean Disaster Emergency Management Agency (CDEMA) has been in regular contact with NEMO St. Vincent and the Grenadines and the following was reported:



ST. VINCENT AND THE GRENADINES SHELTERS REPORT



Friday, April 16, 2021

PUBLIC SHELTERS

88

NUMBER OF DISPLACED PERSONS IN PUBLIC SHELTERS

4,161

NUMBER OF DISPLACED FAMILIES

1,459

NUMBER OF DISPLACED PERSONS IN PRIVATE SHELTERS

3,718

TOTAL NUMBER OF REGISTERED DISPLACED PERSONS

7,879

NUMBER OF CASUALTIES

0

NEMO EMERGENCY: (784) 458-6366

nemosvg@gov.vc

NEMO HOTLINE: (784) 526-3000

Duty Free Concessions



The Government of SVG has approved 100% waiver of ALL import taxes and fees for relief supplies, water and barrels from April 12 to June 30, 2021. See details on www.cdema.org



Coordination of the Regional Response Mechanism (RRM)

- Detailed Damage Sector Assessment (DDSA) Team arrived earlier this week and have been executing the detailed assessment for specific sectors, namely Water, Health, Agriculture and Electricity. Institutions supporting this initiative include but are not limited to CARILEC, CWWA, CAWASA and CARDI, coordinated by CDEMA.
- CARICOM Disaster Relief Unit (CDRU) being mobilized through the RSS on behalf of CDEMA. The CDRU will assist with relief management at the Port and other humanitarian assistance needs on the ground.
- Ongoing coordination efforts are taking place via the daily briefing of the Caribbean Development Partners Group comprising of regional and international partners.
- The public is being advised to coordinate relief supplies with their National Disaster Office in country, cash donation are recommended and banking details are provided on page 5.
- For further information please contact the Regional Coordination Center via rcuser@cdema.org

Support being provided by RRM and other Partners as at 16 April



WASH

- The Caribbean Water & Wastewater Association (CWWA) is supporting the process of the water samples sent to Trinidad for testing including microbiological and chemical parameters. Test results expected on 16th April.
- Alternative water samples are being collected for shipment and analysis by a certified lab in Martinique (financed by PAHO) and CARPHA (St. Lucia and overseas - certified labs).
- PAHO WASH donations as of 15th April: 4000 Aquatabs 8.68gr (1000-1250 ltr), 36000 Aquatabs (for 1 gallon), four TraceO2 portable test kits, including incubator for microbiology tests, turbidity, pH, residual chlorine, nitrate, nitrite, rapid arsenic and one HACH CN70 residual chlorine test kit.
- UNICEF sent WASH donations that included collapsible water bladders (9X5,000 litres; 1,500 X 10 litres) collapsible water containers (for household use); and purification tablets.
- UNICEF has distributed 480 dignity kits.
- French Red Cross sent 500 Hygiene COVID-19 kits.
- UNICEF and PAHO donated masks - 50,000 for shelters and 50,000 for health care facilities.
- The WASH sector response is being coordinated by CWWA, CAWASA, PAHO and UNICEF.
- PAHO and UNICEF are drafting a CERF and Flash Appeal to support response activities.



RELIEF SUPPORT

- Under Seismic Research Centre's Volcano Ready Communities Sub-project funded by the Community Disaster Risk Reduction Fund (CDRRF) (Donors Global Affairs Canada and EU), CDB reallocated USD135,373 to procure emergency response items, namely:
 - Shelter Supplies (USD 32,702) to NEMO and Red Cross – 50 Water tanks (800 Gallons), 500 Mattresses (36"x75"x6"), and 22 pallets of bottled water (24x500ml bottles in each case, 70 cases per pallet). Ready for dispatch from Trinidad port next week.
 - Monitoring and Early Warning equipment (USD102,671): Seismic Station (Seismometer, recorder, digitizer, power supply and case, 20 Wireless Ethernet Radios, 1 Remote monitoring camera, 3 GPS Antennas and receivers, SO2 Spectrometer for gas measurement and Mavic 300 drone.
- The Co-operative Republic of Guyana has donated necessary supplies which is expected to arrive in St. Vincent & the Grenadines today, April 16, 2021 via the MV Miss Meena vessel. The donation includes 1000 water tanks (800 to 1000 gallons), 150 portable toilets, 1000 respirator masks with filters and 10 000 hygiene kits.
- The Government of St. Kitts & Nevis has pledge to donate a bobcat to assist with clean-up and recovery efforts.

Support being provided by RRM and other Partners as at 16 April



COORDINATION - UN SYSTEM

- **UNRCO:** Sector working groups were created to facilitate an efficient way to coordinate and avoid overlaps. Five (5) sector groups have been created: WASH (PAHO, IFRC, CWWA, CDEMA, CAWASA, CARPHA USAID, CRS), Health (PAHO, UNICEF, UNFPA, IFRC, USAID, CARPHA FCDO, OECS), Food Security and Livelihoods (WFP, FAO, UNICEF, UNDP), Shelter (IOM, UNFPA, WFP, IFRC), Protection - Gender-Based Violence (UN Women, UNICEF, UNFPA, IOM, OHCHR, IFRC).
- The UN RC, along with Heads of Agencies from WFP and UNICEF, will travel tomorrow to Saint Vincent to review the UN response thus far and plan any deployment of additional UN support.
- **UNDP:** Will be facilitating the development of an initial response recovery plan that could change based on assessments in three areas: housing and damage assessments, emergency deployment, restoration, and regeneration of farms and forest impacted by the eruption.
- **WFP:** Held the first meeting of livelihoods in technical assistance. Cash transfer is the primary modality of assistance being explored and operationalized to support evacuees. A report is ongoing that covers the areas of Livelihoods and Agricultural. Additionally, WFP has been working with the Ministry of Education to digitize the registration process of persons in shelters. Lastly, there is a cargo-only WFP vessel scheduled to depart next 20 April.
- **UNWOMEN:** Convened Gender Equality Coordination Group and working with key partners to monitor protection risks.
- **IOM:** Meeting with people from CRS, Shelterbox focusing primarily on housing at this stage. The shelter working group focuses more on emergency shelters considering that this is where most evacuees are being housed. IOM has deployed a full-time Shelter Coordinator flying into SVG for at least two months.
- **HEALTH:** The sector met to present the needs identified for the services providing capacity and enhancing EOC. The MoH is providing leadership and guidance to reduce footprint. The sector indicated that some critical needs include health service delivery directed to dialysis and some oncological services. MoH has some structured responses in surveillance to get more data organized. There will be psychosocial and mental health services to reach displaced families.

List of preparatory actions being undertaken by RRM and other Partners



DONATIONS *(monetary donations rather than relief supplies are encouraged at this time)*

The Office of the Prime Minister of St. Vincent and the Grenadines has provided banking information for donations to be made for disaster relief.

For further credit to:

Bank of America
SWIFT Code: BOFAUS3M

Name: Government of St. Vincent and the Grenadines
Accountant General - Disaster Relief Fund

Bank of New York
SWIFT Code: IRVTUS3N

Bank: Bank of St. Vincent and the Grenadines

Address: Bedford Street, Kingstown, St. Vincent and the Grenadines

Account No.: 137741

Swift Code: NCBVVC22

Donations may also be given through CDEMA La Soufriere Donation Facility via the banking details below:

Company Name and Address

CARIBBEAN DISASTER EMERGENCY
MANAGEMENT AGENCY (CDEMA)
Address: Resilience Way, Lower Estate,
St. Michael, Barbados, West Indies

For persons outside of Barbados:

Intermediary Bank: Wells Fargo Bank, NA
SWIFT Code: PNBUS3NNYC
ABA Routing #: 026 005 092
Account Number: 2000192003913
Bank Address: 11 Penn Plaza, 4th Floor, New York, NY

For persons in Barbados:

Beneficiary Bank: CIBC FirstCaribbean International Bank
Bank Address: Warrens, St. Michael, Barbados
Swift Code: FCIBBBBB
Name of Beneficiary: CDEMA La Soufriere Relief
Account Number: 1001206239
Currency of Account: BARBADOS DOLLARS

Beneficiary Bank: CIBC FirstCaribbean International Bank
Bank Address: Warrens, St. Michael, Barbados
Swift Code: FCIBBBBB
Name of Beneficiary: CDEMA La Soufriere Relief
Account Number: 1001206240
Currency of Account: UNITED STATES DOLLARS