

# FLOODING IN GUYANA & SURINAME

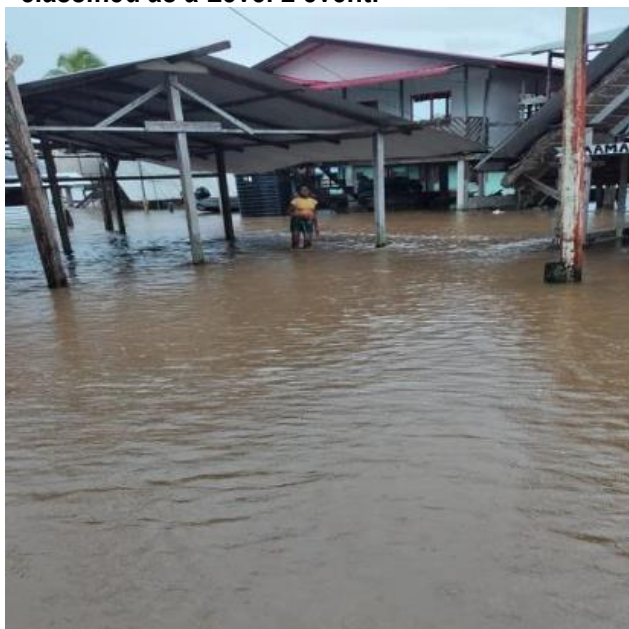
## SITUATION REPORT No. 2

AS OF 3:00 PM ON 23 JUNE, 2021

### Guyana and Suriname impacted by adverse flooding

#### SITUATION OVERVIEW

- A Tropical Wave embedded within the ITCZ affected Guyana resulting in heavy rainfall during the month of May into June 2021. Over the past two days, the Civil Defence Commission (CDC) has continued to receive reports of flooding across the country. Through the powers conferred upon the Head of State by Article 99 of the Constitution, the President, His Excellency Mohammed Irfaan Ali declared a disaster in the Co-operative Republic of Guyana by virtue of flooding on June 9, 2021. This proclamation was published in the Official Gazette on June 10, 2021.
- Since March 2021, there has been relatively heavy rains in all of South Suriname and in the coastal zone, following a rather 'wet' and short dry season. Rainfall increased over the past few weeks with high peaks of several days of constant rain, the last being in the week of May 21 2021. This led to flooding of especially the Tapanahony and Marowijne rivers (south of Suriname), partly or fully submerging various villages, their agricultural plots and other surrounding lands. Not only in the remote areas but also the capital Paramaribo and all the districts in the Coastal area (Marowijne, Commewijne, Paramaribo(capitol), Wanica, Para, Brokopondo, Saramacca, Coronie and Nickerie) got affected adversely by the heavy and constant rainfall. **The flooding is classified as a Level 2 event.**



Flooding in the Village "Langatabiki", Marowijneriver, Suriname (Source: NCCR - June 16, 2021)



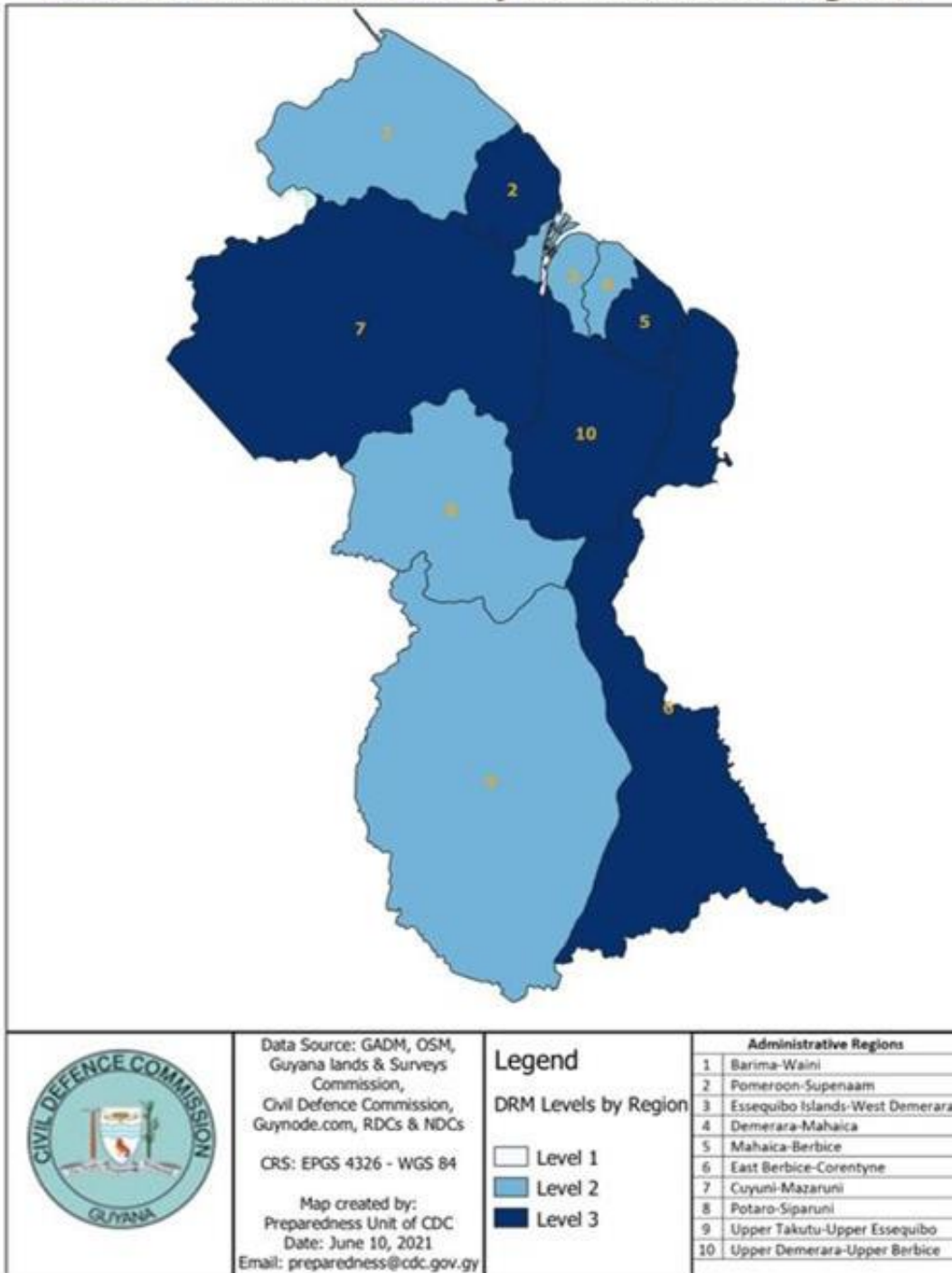
Flooding in Region 10, Guyana (Source: CDC - June 12, 2021)



## Updates from Impacted CDEMA Participating State

### SITUATION SUMMARY

#### Disaster Levels of Floods by Administrative Regions

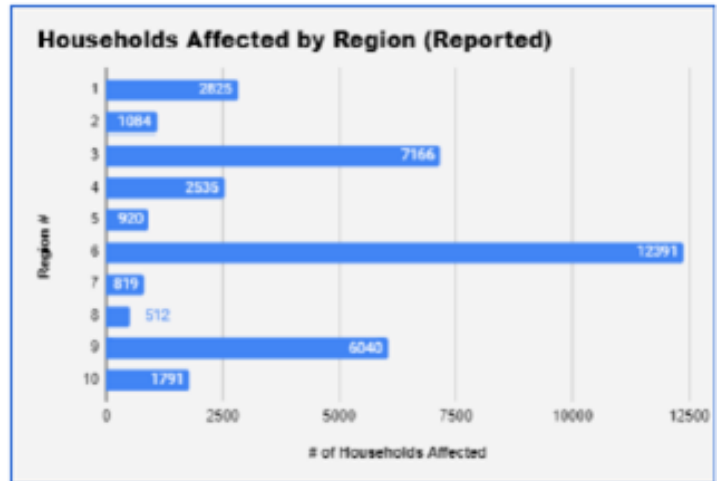




## Updates from Impacted CDEMA Participating State

The Situation Report by the Civil Defence Commission (CDC), Guyana issued on 17 June, 2021 stated the following:

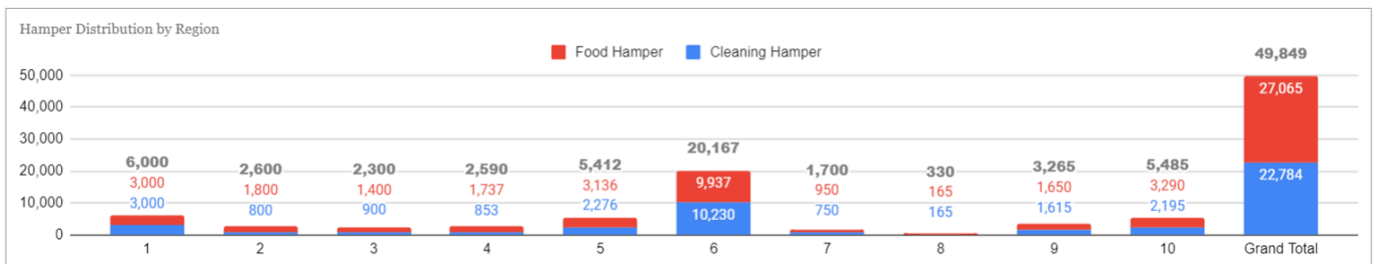
- CDC continues to receive and verify reports of severe flooding across communities with water entering homes, livestock and domestic animals in distress and farmlands inundated and resulting crop damages.
- Regions 10, 7, 6, 5 and 2 have been the most impacted.
- Since May 18, 2021 the CDC has received reports of 36,083 households suffering flooding in more than 300 communities across all ten (10) Administrative Regions.
- A total of 216 persons are currently being housed in a total of 9 shelters activated in Regions 2, 5, 9 and 10.



**GRAND TOTAL (REPORTED) = 36,083**

## Humanitarian Assistance

During the period of May 18 to present, a total of 22,784 cleaning hampers and 27,065 food hampers have been distributed across the Regions as a form of emergency relief.



## Civil Defence Commission (CDC) Response Actions:

- Activated the National Emergency Operations Centre (NEOC) and led the development of an action plan for the national flood response.
- Continues to dispatch emergency relief supplies to flood affected Regions and communities.
- Continues to manage and support shelter operations in Regions where these are activated.
- Continues to engage CDEMA, other regional and international stakeholders for support to national flood response.
- Kept the public updated through regular press releases, interviews and alerts.
- Continues to provide technical support to the Regional Emergency Response System.
- Continues to acquired financial support and relief supplies from the Private Sector, NGOs and private citizens.





## Updates from Impacted CDEMA Participating State

# CIVIL DEFENCE COMMISSION GUYANA FLOOD RELIEF NEEDS LIST

VERSION 5

**Organizations and individuals desirous of donating to the flood relief operations are to be guided by the list below:**

<u>ITEMS</u>	<u>QUANTITY</u>
1. Face masks (Cloth, Surgical Face Masks - KN95 & N95 masks)	200,000 (Each)
2. Long boots (assorted sizes)	10,000
3. Life Jackets	5,000
4. Water purification tablets (preferably small ones)	1,000,000
5. 5 gallon Collapsible Water Carrier Containers with Handle	10,000
6. Treated mosquito nets (single and double)	2,000
7. Cots	2,000
8. Thermometers	100
9. Chargeable and Battery operated lamps	1,000
10. Tents (10 x 10 ft, 20 x 20 ft, 20 x 30ft, 20 x 40ft)	50 (Each)
11. Tarpaulins (20 x 20ft, 20 x 30ft)	100 (Each)
12. Trucks: 2 per region	20
13. Pick ups: 2 per region	20
14. Canters	3
15. Boat Engines (15 HP, 30HP, 40HP, 75HP)	20 (Each)
16. Aluminum Boats (20-24ft, 12-15ft, 8-10ft)	20 (Each)
17. Mobile Drainage Pumps: Diesel Powered, Hydraulically driven axial flow mobile pump with a minimum Total Dynamic Head of 20 feet. Discharge Capacity: 40 Cubic Feet per sec, 17,953 GPM - Each	40
18. 24" diameter discharge pipes Feet	100
19. 45 degree bends each	2
20. Mobile Drainage Pumps: Hydraulically driven axial flow mobile pump with a minimum Total Dynamic Head of 20 feet. Discharge Capacity: 120 Cubic Feet per sec, 53,860 GPM - each	20
21. 42" diameter discharge pipes - Feet	100
22. 45 degree bends - Each	2

### MONETARY DONATIONS

For Direct Money Transfers into CDC Flood Relief Republic Bank Account (Acc #: **962356519938** and Swift Code: **RBGLGYGG**) kindly:

1. Indicate that the transfer is for "GUYANA FLOOD RELIEF"
2. Send a confirmation note to telephone number (592) **604.9967**.

THIS LIST MAY BE ALTERED AS THE NEED ARISES



To donate kindly contact NEMS at:  
**226 1117 OR 6007500**



## Updates from Impacted CDEMA Participating State

# CIVIL DEFENCE COMMISSION GUYANA FLOOD RELIEF NEEDS LIST

VERSION 5

**Organizations and individuals desirous of donating to the flood relief operations are to be guided by the list below:**

<u>ITEMS</u>	<u>QUANTITY</u>
1. Excavators: Long Reach (45-52 feet Excavators 45-52 feet excavators. Approximately 23-25 tons; Reach of Boom: 45-52 feet; Weight Range of equipment: 23-25 tons.	10
2. Excavators: Medium Reach (30-37) feet Excavators 45-52 feet excavators. Approximately 14-18 tons; Reach of Boom: 30-37 feet; Weight Range of equipment: 14-18 tons.	10
3. Excavators: Mini Excavators (12-15 feet Excavators 45-52 feet excavators. Approximately 4-6 tons; Reach of Boom: 12-15 feet; Weight Range of equipment: 4-6 tons.	10
4. Amphibious Excavator. (Long Reach); Reach of Boom: 45-52 feet; Weight Range of equipment: 23-25 tons.	5
5. Amphibious Excavator. (Medium Reach); Reach of Boom: 30-37 feet; Weight Range of equipment: 14-18 tons.	5
6. Antelope Grass	-
7. Rice brand/wheat milling	-
8. Molasses	-

### MONETARY DONATIONS

For Direct Money Transfers into CDC Flood Relief Republic Bank Account (Acc #: **962356519938** and Swift Code: **RBGLGYGG**) kindly:

1. Indicate that the transfer is for "GUYANA FLOOD RELIEF"
2. Send a confirmation note to telephone number **(592) 604.9967**.

**THIS LIST MAY BE ALTERED AS THE NEED ARISES**



To donate kindly contact NEMS at:  
**226 1117 OR 6007500**

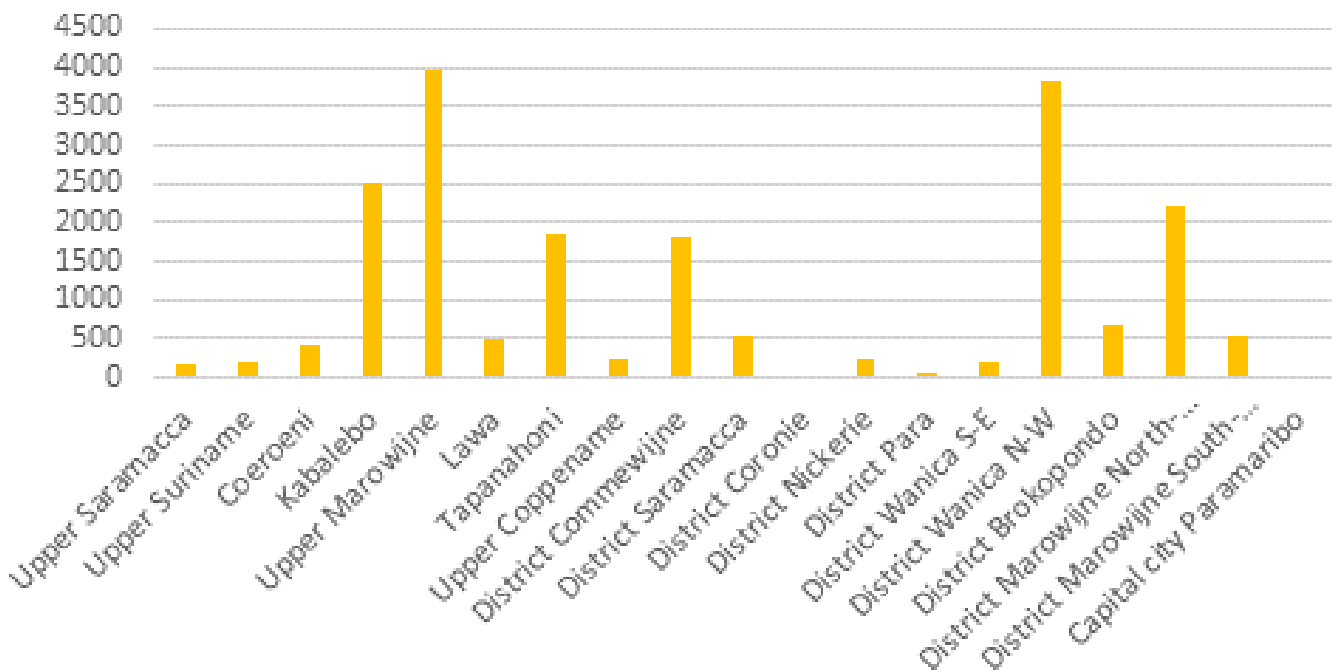


## Updates from Impacted CDEMA Participating State

The Situation Report by the National Coordination Center for Disaster Relief (NCCR), Suriname issued on 16 June, 2021 stated the following:

- The areas affected the most are in the district of Sipaliwini in the Southern part of Suriname, in particular, the administrative resorts and furthermore all of the Districts in the coastal area.
- Flooding is being experienced in all ten (10) districts and in the seven (7) administrative regions of Sipaliwini. Extreme conditions are being experienced in some communities with homes almost completely inundated, livestock and domestic animals in distress and farmlands inundated resulting in crop damages.
- The NCCR recommends to the President that the situation within the country be classified as a Level 2 event. The national capacity is not overwhelmed, but some external assistance is hereby required and being sought through CDEMA's Regional Response Mechanism (RRM).
- The figure below presents the affected population per district. Note that at the time this report was written, the data from Paramaribo and Coronie were not present.

Population severely affected by district





## Updates from Impacted CDEMA Participating State

### Effects on the Population:



**Confirmed deaths:** none (due to the flooding)



**Injured:** Inventory pending



**Displaced:** Approx. 1000 households (over 6,500 persons) displaced



**Sanitation:** Limited or no access to sanitation in the submerged areas



**Water:** Drinking water sources are polluted or limited. River water is polluted and collection of rainwater is limited, either due to damage to water collection materials (incl. the Durotanks that were distributed after the flooding of 2006) or insufficient for the increased population in non-submerged areas.



**Food:** Widespread food shortage due to prolonged submerged agricultural plots and impossibility to fish and hunt in many areas.



**Education:** All schools closed, not only because of the floods but also because of the Covid pandemic (3rd wave).



The COVID-19 situation in Suriname is now in Code Purple for the population and code Black for the Hospitals.



**Coordination:** Coordination is being facilitated from the NCCR Crisis Center. The Crisis Center receives hands-on support from representatives of the Suriname Red Cross. Coordinating meetings are held daily with all main coordinating and support organizations.

- NCCR in coordination with several ministries such as the Ministry of Regional Development and Sports, Social affairs, Cabinet of the Vice President and Defense has already provided some emergency food and water assistance and tarpaulins for shelter.
- Many villages are awaiting emergency goods including tarpaulins, water storage tanks and food. Assessment operations are ongoing in coordination between NCCR, District Commissioners and the Suriname Red Cross.
- No 'search and rescue' actions planned.





## Updates from Impacted CDEMA Participating State

### PRIORITY NEEDS

Immediate funds in particular for:

- Food
- Water
- Emergency housing (tents, tarpaulins)
- Repair materials for damaged houses
- Transport
- Health and sanitation education and facilities
- Cleaning materials

A more detailed Needs list is being compiled.

**Photo Collage:** Affected households and filling of sandbags in Suriname





## Coordination of the Regional Response Mechanism (RRM)

- CDEMA's Advanced team arrived in Guyana on June 17th, ahead of the Detailed Damage Sectoral Assessment (DDSA) teams to be deployed next week.
- Arrangements have been initiated by the CDEMA CU to provide support through coordination of Detailed Damage Sectoral Assessment Teams to support the assessment process in Guyana.
- The Caribbean Development Partners Group (CDPG) convened meetings to coordinate relief efforts and was briefed by the CDC and NCCR Directors on 15 June.
- The Regional Response Mechanism (RRM) stands ready to provide support to Suriname where required.
- CDEMA will continue to engage regional and international partners to support the impacted Participating States.



**Top Left** - CDEMA Advanced Team departing for Guyana on the RSS Aircraft on June 17, 2021.

**Bottom Left**: A total of 36,000 PPEs with a combination of N95 and Surgical masks being delivered to CDC, Guyana that were transported via the RSS Aircraft on June 17, 2021

**Bottom Right**: CDEMA's Advanced Team meeting with the Civil Defence Commission - CDC on June 17, for a brief on the flooding in Guyana, to effectively coordinate relief efforts.





## Coordination of the Regional Response Mechanism (RRM)

### Support being provided by RRM and Other Partners

- Barbados has pledged 500 military cots to Guyana.
- Additional relief items specifically 1200 blankets; 2500 N95 masks; 480 Hand sanitizers; 1000 mini hygiene kits and 65 family necessity kits have arrived with the shipment of military cots.
- On June 22<sup>nd</sup> 11,200 KN 95 Surgical Masks as well as 30,720 FFP Half face Masks were delivered.
- The National Disaster Coordinator for Trinidad and Tobago, the sub-regional focal point for the Southern Sub-Region, has been briefed on the situation and stands ready to support Guyana as required.
- Multi-sector country teams have been assembled to conduct Detailed Damage Sector Assessment (DDSA) in the five (5) impacted Regions in the following sectors: Health, Mining, Social, Agriculture, Infrastructure and Housing, Water and Sanitation and Shelters. This DDSA will take place between June 23- June 30.